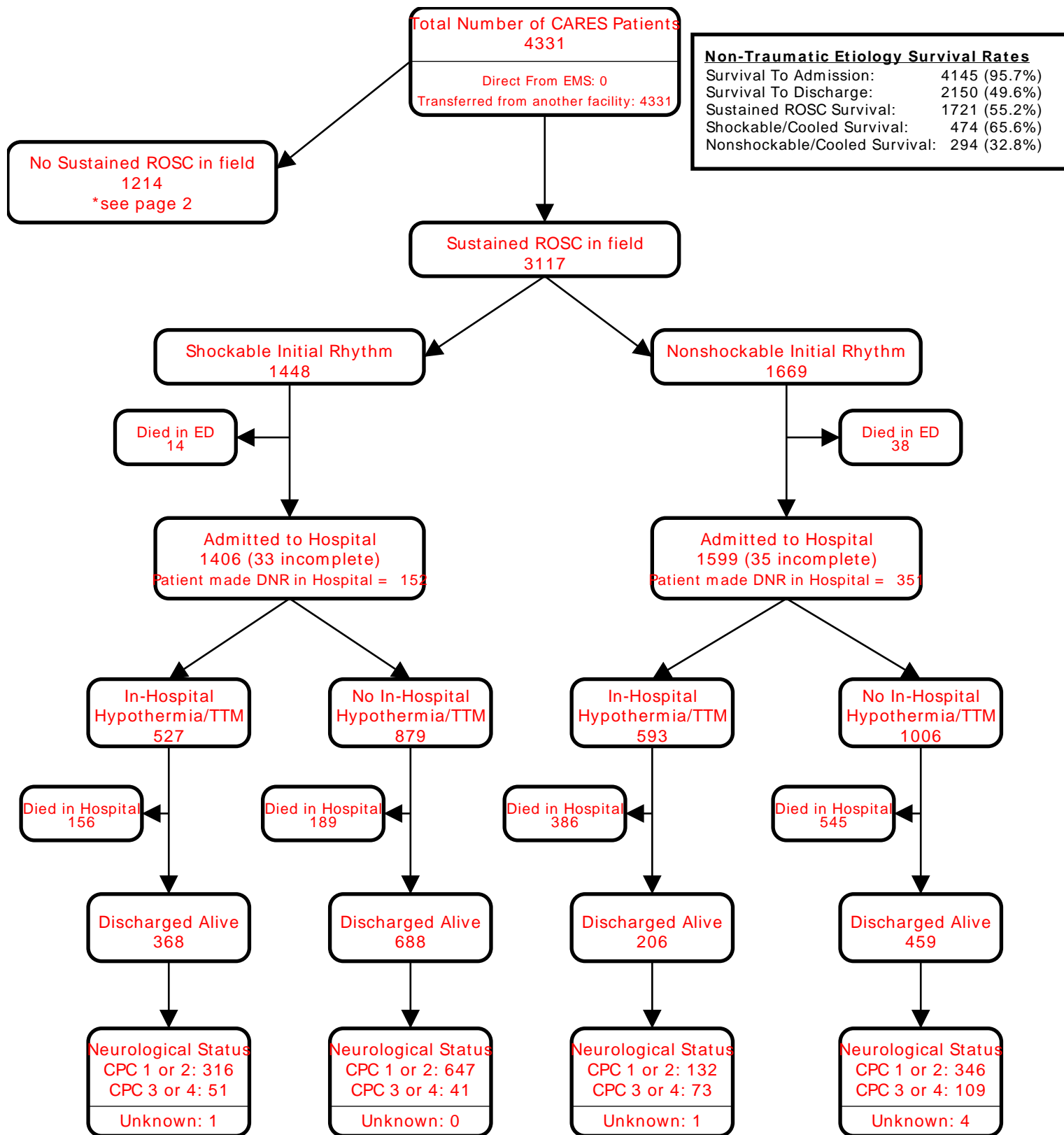


# CARES Hospital Survival Report

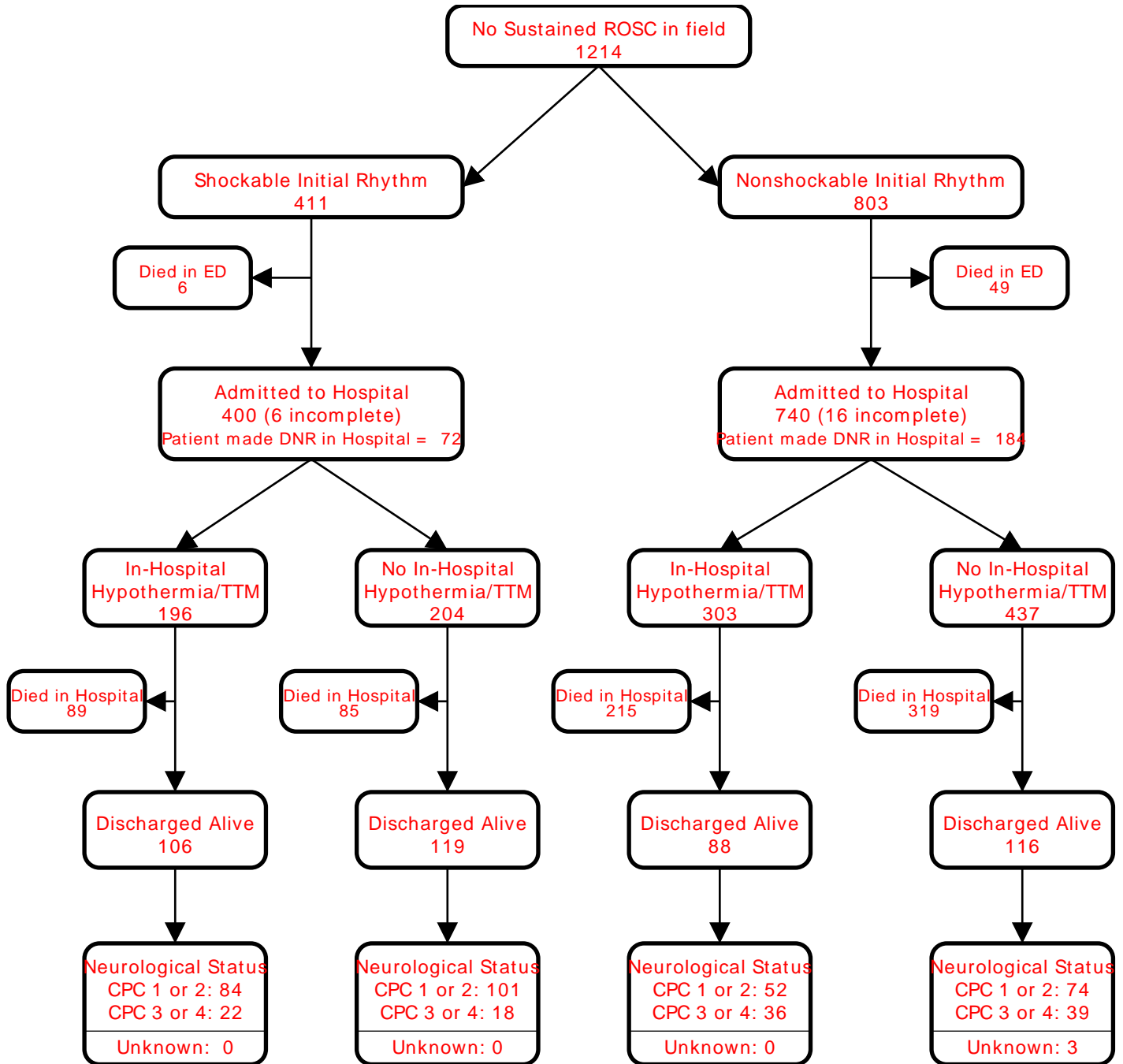
Inclusion Criteria: Etiology=Non-Traumatic Arrest; Resuscitation Attempted by 911 Responder; End of Event = Pronounced in ED or Ongoing Resuscitation in ED National Data | Direct/Transferred: Transferred from Another Facility | Date of Arrest: 01/01/25-12/31/25



Patients are included in the report of the final facility of care. Patients transferred out of your facility (from the ED or after hospital admission) are not included in this report. CARES case: An out-of-hospital cardiac arrest where resuscitation is attempted by a 911 responder (CPR and/or defibrillation). This would also include patients that received an AED shock by a bystander prior to the arrival of 911 responders.

# CARES Hospital Survival Report

Inclusion Criteria: Etiology=Non-Traumatic Arrest; Resuscitation Attempted by 911 Responder; End of Event = Pronounced in ED or Ongoing Resuscitation in ED  
National Data | Direct/Transferred: Transferred from Another Facility | Date of Arrest: 01/01/25-12/31/25



Patients are included in the report of the final facility of care. Patients transferred out of your facility (from the ED or after hospital admission) are not included in this report.  
CARES case: An out-of-hospital cardiac arrest where resuscitation is attempted by a 911 responder (CPR and/or defibrillation). This would also include patients that received an AED shock by a bystander prior to the arrival of 911 responders.