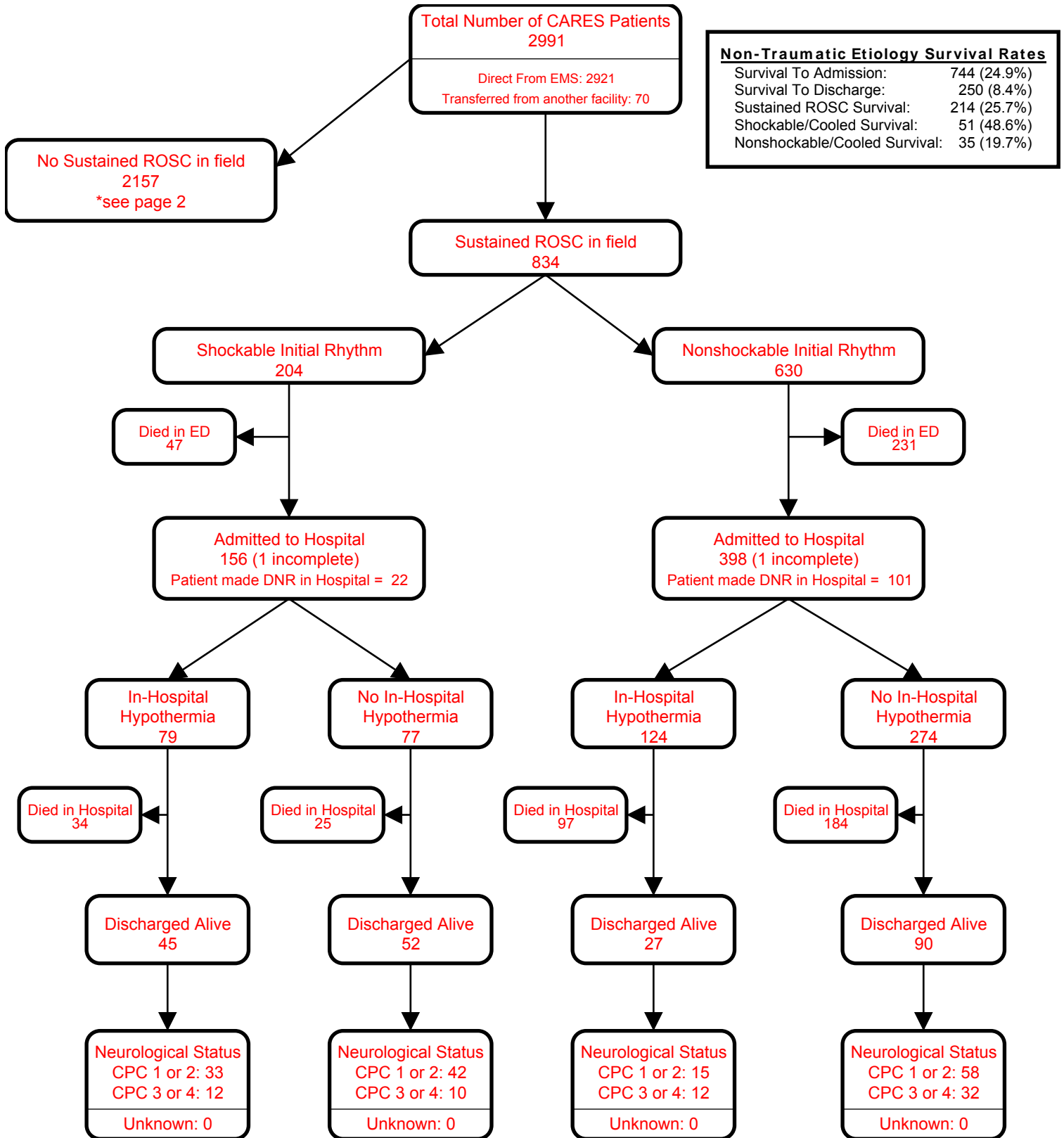


# CARES Hospital Survival Report

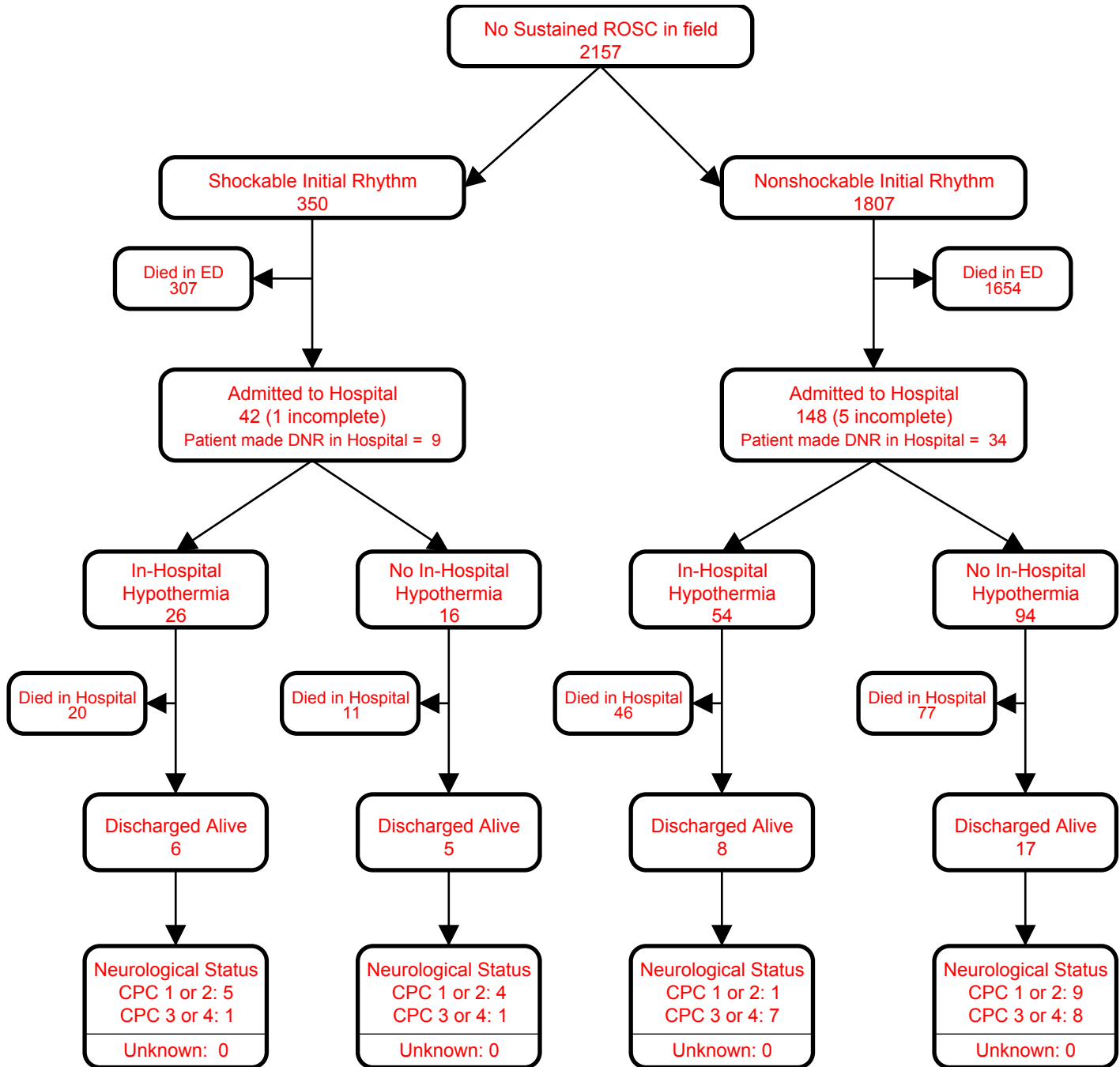
Sample Report



Patients are included in the report of the final facility of care. Patients transferred out of your facility (from the ED or after hospital admission) are not included in this report.  
 CARES case: An out-of-hospital cardiac arrest where resuscitation is attempted by a 911 responder (CPR and/or defibrillation). This would also include patients that received an AED shock by a bystander prior to the arrival of 911 responders.

# CARES Hospital Survival Report

Sample Report



Patients are included in the report of the final facility of care. Patients transferred out of your facility (from the ED or after hospital admission) are not included in this report.  
 CARES case: An out-of-hospital cardiac arrest where resuscitation is attempted by a 911 responder (CPR and/or defibrillation). This would also include patients that received an AED shock by a bystander prior to the arrival of 911 responders.

# CARES Hospital Benchmarking Report (Non-Traumatic Etiology)

Sample Report

Total # of CARES Patients - Hospital	311	Total # of CARES Patients - State	2981	Total # of CARES Patients - National	49779
Direct from EMS	310	Direct from EMS	2911	Direct from EMS	47421
Transferred from another facility	1	Transferred from another facility	70	Transferred from another facility	2358

In-Hospital Characteristics	Hospital		State		National	
	Total (%)	Survived to Discharge (%)	Total (%)	Survived to Discharge (%)	Total (%)	Survived to Discharge (%)
Died in ED	227 (73.0)	--	2238 (75.1)	--	28016 (56.3)	--
Admitted to hospital	84 (27.0)	36 (42.9)	743 (24.9)	250 (33.6)	21764 (43.7)	8091 (37.2)
In-hospital hypothermia/TTM*	16 (19.0)	9 (56.2)	285 (38.4)	86 (30.2)	9835 (45.2)	3234 (32.9)
Patient made DNR*	23 (27.4)	4 (17.4)	166 (22.3)	22 (13.3)	5166 (23.7)	297 (5.7)
In-hospital mortality*	48 (57.1)	--	493 (66.4)	--	13673 (62.8)	--
Discharged alive	36 (11.6)	--	250 (8.4)	--	8091 (16.3)	--
Discharged with good/moderate CPC	18 (5.8)	--	167 (5.6)	--	6510 (13.1)	--

Pre-Hospital Characteristics	Hospital			State			National		
	Total (%)	Survived to Admission (%)	Survived to Discharge (%)	Total (%)	Survived to Admission (%)	Survived to Discharge (%)	Total (%)	Survived to Admission (%)	Survived to Discharge (%)
	<b>311</b>	<b>84 (27.0)</b>	<b>36 (11.6)</b>	<b>2981</b>	<b>743 (24.9)</b>	<b>250 (8.4)</b>	<b>49779</b>	<b>21764 (43.7)</b>	<b>8091 (16.3)</b>
Gender									
Male	189 (60.8)	46 (24.3)	19 (10.1)	1706 (57.2)	391 (22.9)	139 (8.1)	30899 (62.1)	13357 (43.2)	5335 (17.3)
Female	122 (39.2)	38 (31.1)	17 (13.9)	1275 (42.8)	352 (27.6)	111 (8.7)	18874 (37.9)	8403 (44.5)	2756 (14.6)
Mean Age	60.8	--	--	61.3	--	--	60.9	--	--
Initial Rhythm									
Shockable	60 (19.3)	23 (38.3)	13 (21.7)	552 (18.5)	198 (35.9)	108 (19.6)	12155 (24.4)	6918 (56.9)	4157 (34.2)
Unshockable	251 (80.7)	61 (24.3)	23 (9.2)	2429 (81.5)	545 (22.4)	142 (5.8)	37611 (75.6)	14835 (39.4)	3924 (10.4)
Witnessed Status									
Unwitnessed	108 (34.7)	18 (16.7)	7 (6.5)	1496 (50.2)	273 (18.2)	63 (4.2)	19882 (39.9)	7198 (36.2)	1801 (9.1)
Bystander Witnessed	152 (48.9)	48 (31.6)	20 (13.2)	1111 (37.3)	333 (30.0)	134 (12.1)	21351 (42.9)	10648 (49.9)	4561 (21.4)
Witnessed by 911 Responder	51 (16.4)	18 (35.3)	9 (17.6)	374 (12.5)	137 (36.6)	53 (14.2)	8546 (17.2)	3918 (45.8)	1729 (20.2)
Sustained ROSC in field	116 (37.3)	71 (61.2)	32 (27.6)	832 (27.9)	554 (66.6)	214 (25.7)	24368 (49.0)	18147 (74.5)	7453 (30.6)
Hypothermia care initiated in the field	6 (1.9)	3 (50.0)	2 (33.3)	50 (1.7)	22 (44.0)	11 (22.0)	3050 (6.1)	1971 (64.6)	690 (22.6)
Utstein† Arrest	40 (12.9)	18 (45.0)	10 (25.0)	305 (10.2)	115 (37.7)	68 (22.3)	7385 (14.8)	4456 (60.3)	2780 (37.6)

Patients are included in the report of the final facility of care. Patients transferred out of your facility (from the ED or after hospital admission) are not included in this report. This report includes only those calls with completed hospital data.  
 CARES case: An out-of-hospital cardiac arrest where resuscitation is attempted by a 911 responder (CPR and/or defibrillation). This would also include patients that received an AED shock by a bystander prior to the arrival of 911 responders.  
 \*Among admitted patients.  
 †Utstein patient: witnessed by bystander and found in a shockable rhythm.

# CARES Hospital Benchmarking Report (Non-Traumatic Etiology)

Sample Report

## Supplemental Hospital elements (analysis limited to questions with Yes or No response only)

Supplemental Characteristics	Hospital		State		National	
	Total (%)	Survived to Discharge (%)	Total (%)	Survived to Discharge (%)	Total (%)	Survived to Discharge (%)
Why was hypothermia care not initiated or continued in the hospital?						
Awake/Following commands	1 (16.7)	1 (100.0)	10 (7.1)	10 (100.0)	920 (24.9)	855 (92.9)
DNR/Family request	1 (16.7)	0 (0.0)	22 (15.6)	0 (0.0)	434 (11.7)	38 (8.8)
Unwitnessed Cardiac Arrest	1 (16.7)	0 (0.0)	14 (9.9)	0 (0.0)	296 (8.0)	46 (15.5)
Unshockable Rhythm	2 (33.3)	0 (0.0)	8 (5.7)	3 (37.5)	374 (10.1)	94 (25.1)
No TH program in place	0 (0.0)	0 (NaN)	1 (0.7)	0 (0.0)	65 (1.8)	22 (33.8)
Other	1 (16.7)	1 (100.0)	86 (61.0)	32 (37.2)	1611 (43.5)	503 (31.2)
Unknown	0 (0.0)	0 (NaN)	0 (0.0)	0 (NaN)	0 (0.0)	0 (NaN)
Myocardial infarction diagnosis	20 (11.0)	5 (25.0)	114 (8.5)	51 (44.7)	4344 (18.2)	1934 (44.5)
Coronary angiography performed	15 (8.2)	10 (66.7)	127 (8.7)	83 (65.4)	4620 (16.7)	3093 (66.9)
Cardiac stent placed	6 (3.3)	4 (66.7)	64 (4.4)	41 (64.1)	2225 (8.0)	1510 (67.9)
CABG performed	1 (0.5)	1 (100.0)	5 (0.3)	5 (100.0)	275 (1.0)	254 (92.4)
ICD placed/scheduled	1 (0.6)	1 (100.0)	35 (2.4)	35 (100.0)	1495 (5.4)	1453 (97.2)

Patients are included in the report of the final facility of care. Patients transferred out of your facility (from the ED or after hospital admission) are not included in this report. This report includes only those calls with completed hospital data.  
 CARES case: An out-of-hospital cardiac arrest where resuscitation is attempted by a 911 responder (CPR and/or defibrillation). This would also include patients that received an AED shock by a bystander prior to the arrival of 911 responders.

\*Among admitted patients.

†Utstein patient: witnessed by bystander and found in a shockable rhythm.